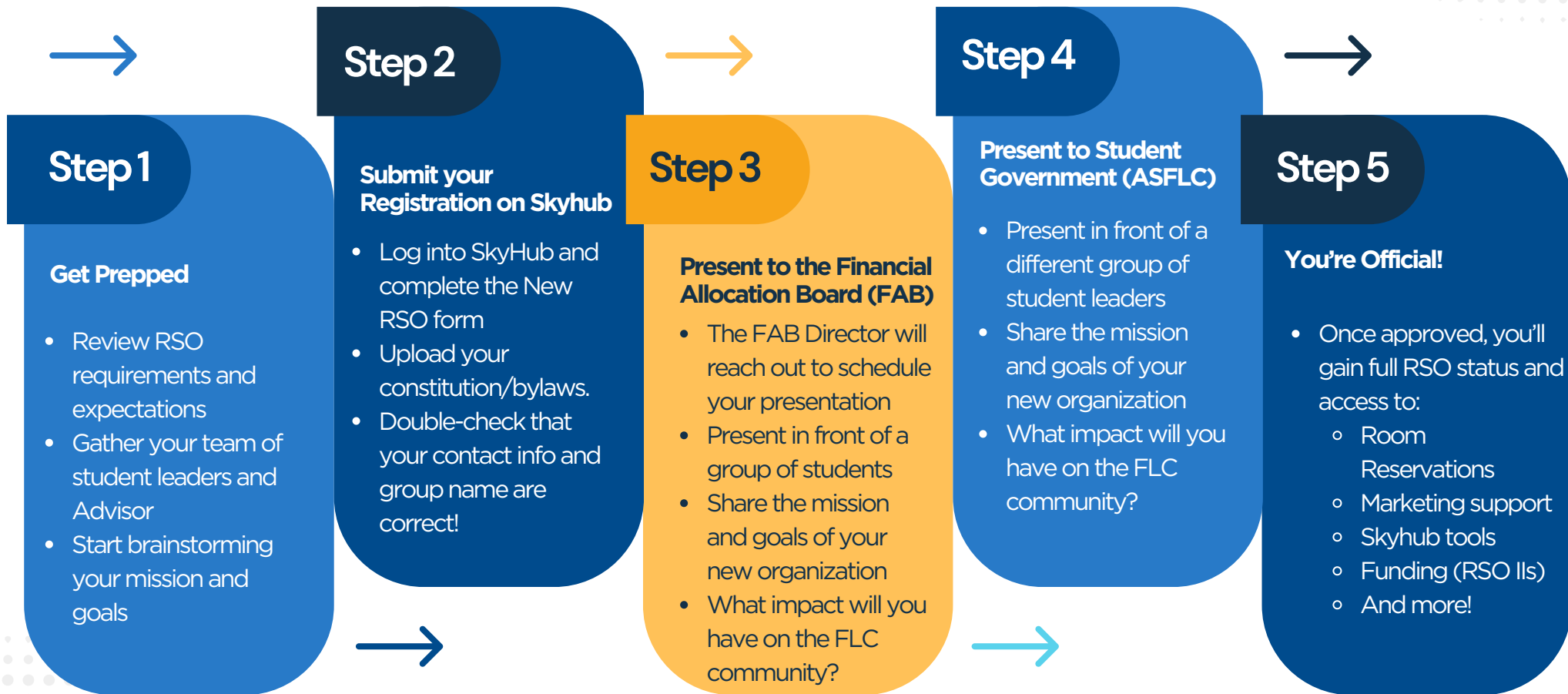
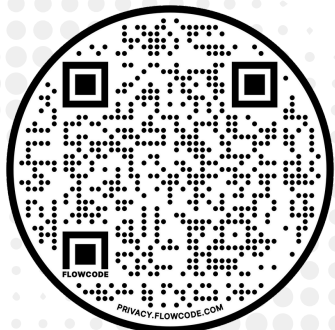


Starting a Student Organization @ FLC

From start to finish this process can take around 2-3 weeks



Reach out to the FAB Director (fab_director@fortlewis.edu) or the Student Involvement Center (studentinvolvement@fortlewis.edu) with questions!



Registered Student Organization (RSO) Level Requirements

Before registering your RSO, decide which level is right for your group.

There are two levels of RSOs, each with different requirements and benefits. Review the options below to choose the best fit for your club.

RSO I

Requirements:

- A FLC-affiliated Advisor (staff or faculty)
- One contact person for the organization
- Two general members
- Mission statement or organization description

Benefits:

- Access to Skyhub tools
- Room reservations
- Cross-campus marketing
- Assistance from the Student Involvement Center

RSO II

Requirements:

- A FLC-affiliated Advisor (staff or faculty)
- Four student leaders with defined leadership roles
- Constitution and bylaws
- Mission statement or organization description

Benefits:

- Access to Skyhub tools
- Room reservations
- Cross-campus marketing
- Assistance from the Student Involvement Center
- RSO budget and yearly allocation
- Access to Financial Allocation Board Grant applications